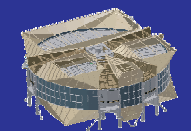
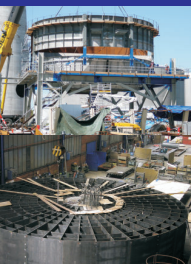


Rehabilitation of Air Preheaters & Gas-Gas Heaters



Reference list

Power Plant	Owner	Country	Original manufact.	Number of heaters	Rotor dia. [m]	Type	Rehab Year
Fusina 3	Enel	Italy	Franco Tosi	2	9.690	APH	2010
Brindisi Sud 3	Enel	Italy	Ansaldo	2	15.270	APH	2010
Tisova 12	CEZ	Czech Rep.	Energietechnik	1	9.190	APH	2008
Brindisi Sud 2	Enel	Italy	Ansaldo	2	12.364	GGH	2007
Fyn 7	Vattenfall	Denmark	BWE	1	16.860	APH	2007
Brindisi Sud 1	Enel	Italy	Ansaldo	2	12.364	GGH	2006
Uppsala KVV	Vattenfall	Sweden	BWE	1	6.970	APH	2005
Avedøre 1	Dong Energy	Denmark	BWE	1	10.530	GGH	2003
Herning	Dong Energy	Denmark	BWE	1	8.390	APH	2001
Riga RTEC 3	Latvernergo	Latvia		2	7.060	APH	1999
La Spezia 3	Enel	Italy	Howden		11.000	APH	1999
Riga RTEC 2	Latvernergo	Latvia		2	7.060	APH	1998
Fyn 7	Vattenfall	Denmark	BWE	1	16.860	APH	1998
Riga RTEC 4	Latvernergo	Latvia		2	7.060	APH	1997
Asnæs 5	Dong Energy	Denmark	BWE	1	12.130	APH	1996
Aros 1-2	Västerås Energy	Sweden	SRM	2	7.700	APH	1992
Skærbæk 11	Dong Energy	Denmark	BWE	2	6.350	APH	1990



BURMEISTER & WAIN ENERGY A/S
Lundtoftegårdsvej 93A
DK-2800 Kgs. Lyngby, Denmark
Tel. +45 39 45 20 00
Fax. +45 39 45 20 05
E-mail: info@bwe.dk
Http://www.bwe.dk

BWE-20-0014rev.1