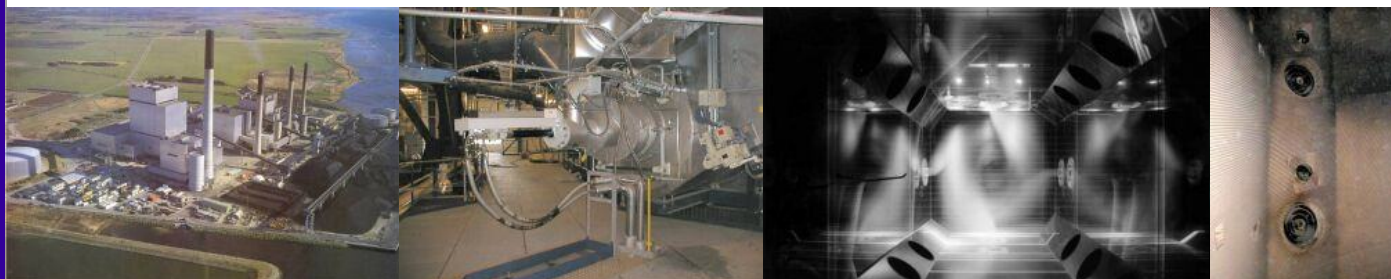


# Low-NO<sub>x</sub> burners - Corner fired

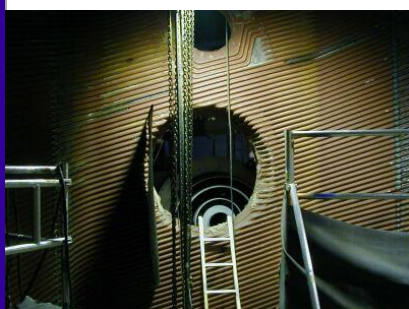


## List of reference



Power plant	Owner	Country	Fuel	Capacity MWe	No. of burners	Size MWth	NO <sub>x</sub> mg/MJ	Year
Avedøreværket 2	Energy E2	Denmark	Incl wood dust	375	12(16)	48	160	2003
Avedøreværket 2*	Energy E2	Denmark	Gas/oil	375	16	57	60	2001
Dolna Odra 7	Zespol Electropolonia	Poland	Coal/oil	200	20	36	<160	1999
Dolna Odra 8	Zespol Electropolonia	Poland	Coal/oil	200	20	36	<160	1999
Nordjyllandsværket 3*	Elsam	Denmark	Coal/oil	420	16	69	170	1998
Dolna Odra 1	Zespol Electropolonia	Poland	Coal/oil	200	20	36	<160	1997
Dolna Odra 2	Zespol Electropolonia	Poland	Coal/oil	200	20	36	<160	1997
Skærbækværket 3*	Elsam	Denmark	Gas/oil	420	16	57	50	1997
Dolna Odra 5	Zespol Electropolonia	Poland	Coal/oil	200	20	36	135-160	1994
Dolna Odra 6	Zespol Electropolonia	Poland	Coal/oil	200	20	36	135-160	1994
Västerås 4	Västerås Stads KV	Sweden	Coal/oil	275	16	35	220	1991
Fynsværket 7*	Elsam	Denmark	Coal/oil	450	16	75	145	1991
Walsum 9*	Steag	Germany	Coal/oil	410	16	60	175	1990
Ruien 5	Electrabel	Belgium	Coal/gas/oil	300	16	40	330	1987

\*New plant



BURMEISTER & WAIN ENERGY A/S  
 Lundtoftegårdsvej 93A  
 DK-2800 Kgs. Lyngby, Denmark  
 Tel. +45 39 45 20 00  
 Fax. +45 39 45 20 05  
 E-mail: info@bwe.dk  
 Http://www.bwe.dk

BWE-20-0006rev3